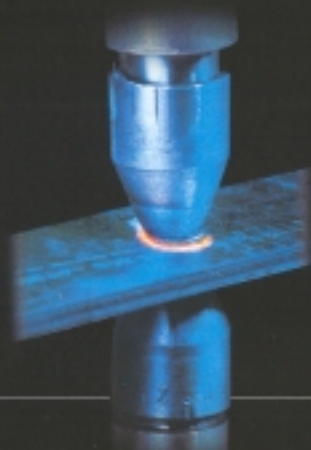


PRESS TYPE SPOT/PROJECTION WELDING MACHINE

MODEL ASR-50A/75A/100A/150A/200A

STABLE WELDABILITY

- Non lubrication cylinder
- Two stage stroke cylinder with electrical control
- Standard sliding unit and platen
- Standard MCCB and E-stop switch
- Applied RWMA standard



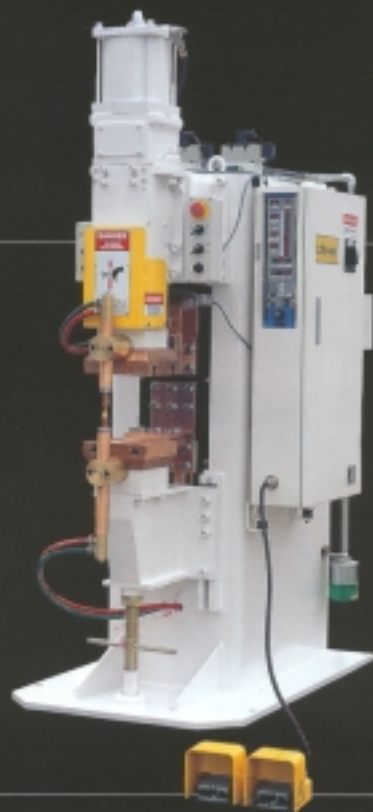
Twin type Air Spot Welder



Air Spot Welder



Air Projection Welder



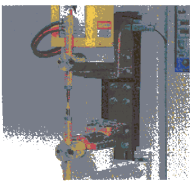
THE PRODUCTS ARE MANUFACTURED
ACCORDING TO THE QUALITY SYSTEM ISO 9001.

chowel

AMERICAN CHOWEL INDUSTRIES INC.
www.chowel.com || e-mail: chowelhan@aol.com

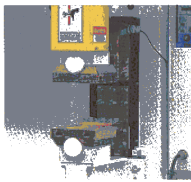
Press Type Spot/Projection Welder -50/75/100/150/200kVA

Model: ASP series



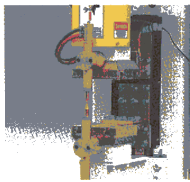
Spot type

Model: APR series



Projection type

Model: ASR series

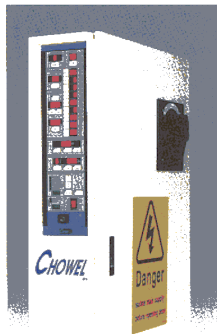


Spot/Projection type

FEATURE

- Equipped with various high capacity welding controls.
- Strong mono block frame construction.
- Speed control to reduce shock and noise at squeeze.
- Stroke change by electric switch operation.
- Ejector type electrode holder.
- Round bar upper and lower horn for easy rotation and front/back adjustment.
- Can be equipped with sliding unit for inch adjustment.
- Integrated with welding control and SCR for easy maintenance.
- Standard palm foot switch.
- Secondary feedback(Toroidal coil)for constant current control.
- Standard MCCB with emergency stop switch for safety operation.
- Fully independent 3 weld intervals.
- 15 independent weld programs.
- Quill and ram bearing cylinder line up.

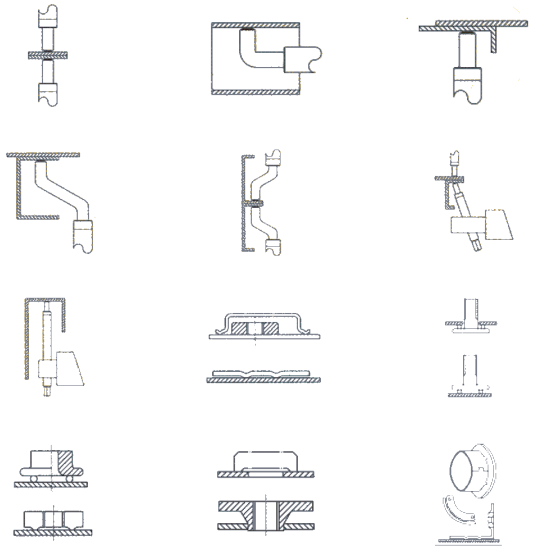
W.CONTROLLER



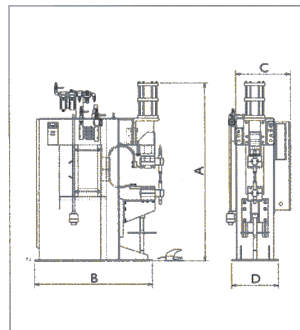
Model:WELCOM- II

APPLICABLE ex.

(SPOT / PROJECTION)



EXTERNAL DRAWING



EXTERNAL DIMENSIONS

MODEL	A	B	C	D
ASR-50A	1,817	1,100	579	450
ASR-75A	1,912	1,250	629	500
ASR-100A	1,912	1,250	629	500
ASR-150A	1,955	1,330	676	500
ASR-200A	1,955	1,380	679	550

MODEL	A	B	C	D
ASR-50A	71.53"	43.30"	22.79"	17.71"
ASR-75A	75.27"	49.21"	24.76"	19.68"
ASR-100A	75.27"	49.21"	24.76"	19.68"
ASR-150A	76.96"	52.36"	26.61"	21.65"
ASR-200A	76.96"	54.33"	26.73"	21.65"

TECHNICAL SPECIFICATION

Model	Rated capacity at 50% D.C	Input power	SPOT								PROJECTION						COMMON							
			Max.secondary current		Max.input capacity	Duty cycle of max. current	Tip holder				Max.secondary current		Max.input capacity	Duty cycle of max. current	Platen			Cylinder stroke	Max.pressure force(Quill)	Required cooling water	Weight			
			at 18" (±10%)	at 24" (±10%)			Length upper	Length lower	Dia.	Taper	at 12" (±10%)	at 18" (±10%)			Spacing	RWMA	Size							
ASR-50KVA	50KVA	Single phase 460/480V 60Hz	23KA	18KA	174KVA	4.1%	8"	12"	1.25"	2MT (RWMA #5)	31KA	20KA	235KVA	2.3%	7.5	#1	6" × 6"	0.5"/2.36"	1600 lbs	2 GPM	1200 lbs			
ASR-75KVA	75KVA		30KA	26KA	300KVA	3.1%					38KA	29KA	380KVA	2.0%		#1	6" × 6"					2000 lbs	2 GPM	1400 lbs
ASR-100KVA	100KVA		36KA	30KA	374KVA	3.6%					46KA	32KA	478KVA	2.2%		#2	8" × 8"					2400 lbs	3 GPM	1700 lbs
ASR-150KVA	150KVA		48KA	38KA	686KVA	2.4%					60KA	45KA	858KVA	1.5%		#2	8" × 8"					3200 lbs	4 GPM	1800 lbs
ASR-200KVA	200KVA		57KA	49KA	1003KVA	2.0%					68KA	57KA	1196KVA	1.4%		#3	9" × 9"					3800 lbs	4 GPM	1900 lbs

* More than 200KVA is available with special order



AMERICAN CHOWEL INDUSTRIES INC.

289 South Street #B Rochester, MI 48307

Tel: 248-601-4310 Fax:248-601-4311

www.chowell.com || e-mail:chowelhan@aol.com

Distributor